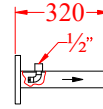


Miscelatori statici in acciaio inox AISI316 completi di raccordo 1/2" per iniezione prodotti chimici, attacchi flangiati.

*Static mixers made in stainless steel AISI316 complete with load chemicals fitting 1/2", flange connections.*

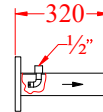
MIX 050

DN 50



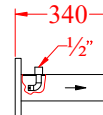
MIX 065

DN 65



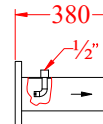
MIX 080

DN 80



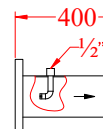
MIX 100

DN 100



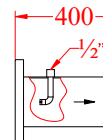
MIX 125

DN 125



MIX 150

DN 150



MIX 200

DN 200

